



**WORLD
AQUATICS**

SWIMMING POOL CERTIFICATION OLYMPIC GAMES AND WORLD CHAMPIONSHIPS

ORGANIZING BODY

BUILDING NAME

OWNER

CONTRACTOR

DESIGN TEAM

DATE

WORLD AQUATICS

APPROVED BY

DATE

SIGNATURE

TABLE OF CONTENTS

1	DRAWING SUBMITTAL REQUIREMENTS	3
2	MEASUREMENT CRITERIA	3
3	TYPE OF VENUE	4
4	ORTHOGONALITY OF THE POOL	4
5	LENGTH AND DIMENSIONAL TOLERANCES - 50M POOL WITH NO BULKHEAD	5
6	LENGTH AND DIMENSIONAL TOLERANCES - 50M POOL WITH BULKHEAD	6
7	LENGTH AND DIMENSIONAL TOLERANCES - 25M POOL WITH BULKHEAD	7
8	WIDTH	8
9	WATER DEPTH	8
10	WALLS	9
11	LANES AND LANE ROPES - OLYMPIC GAMES	10
12	LANES AND LANE ROPES - WORLD CHAMPIONSHIPS - PERMANENT POOLS	12
13	LANES AND LANE ROPES - WORLD CHAMPIONSHIPS - TEMPORARY POOLS	14
14	STARTING PLATFORMS	15
15	NUMBERING	17
16	BACKSTROKE TURN INDICATORS	17
17	BACKSTROKE START LEDGE	17
18	FALSE START ROPE	17
19	WATER CONDITIONS	18
20	LIGHT INTENSITY	19
21	LANE MARKINGS	19
22	BULKHEADS	20
23	MINIMUM DISTANCE SEPARATING THE POOLS	20
24	ADDITIONAL COMMENTS	21
25	SIGNATURES	21

1 DRAWING SUBMITTAL REQUIREMENTS

As part of the pool certification document, the organizing body is required to submit drawings of the pool and associated competition areas for review in addendum with this document. These drawings must be in scale and reflect the as-built condition of the facility. The drawings must include:

- 1.1** A building plan view, including the full deck widths and spectator seating areas;
- 1.2** A pool plan view with corresponding water depths;
- 1.3** A pool longitudinal section view with corresponding water depths;
- 1.4** And a pool cross section view with corresponding water depths.

2 MEASUREMENT CRITERIA

- 2.1** The measurements shall be done by a certified surveyor, appointed or approved by the member in the country in which the venue is located.
- 2.2** The surveying equipment shall be a Total Station. The minimum requirements of the Total Station are the following:
 - 2.2.1** Angle Measurement Accuracy HORIZONTAL and VERTICAL: 1" (0.3 mgon)
 - 2.2.2** Distance Measurement Accuracy: 1mm + 1.5ppm
- 2.3** The surveyor shall provide a Calibration Certificate confirming the measurement quality of surveying equipment. The certificate SHALL have a maximum validity of 1 year.
- 2.4** All dimensions shall be measured using a mini prism or targets.
- 2.5** The measurements corresponding to **PART 2, 16.2.1, 16.2.2, 16.2.6, 16.2.7, 16.2.8 and 16.2.9** shall be measured with the pool full of water. The water level can be lowered up to 5cm to avoid water reflection when measuring.
- 2.6** The measurements corresponding to **PART 2, 16.2.3, 16.2.4, and 16.2.16** shall be measured with the pool empty.
- 2.7** The water temperature shall be 25° TO 28° Centigrade.
- 2.8** the length of the pool in **PART 2, 16.2.1** shall be measured in the centre of each lane.
- 2.9** The width of the pool in **PART 2, 16.2.3** shall be measured at both ends.
- 2.10** The depth of the pool in **PART 2, 16.2.4** shall be measured at least in 3 points per lane: 1m from each end wall and in the centre of the pool.
- 2.11** The verticality of the end walls **SR 16.2.5** shall be measured in the centre of each lane. The end walls shall be vertical and form 90 degrees right angles. The admissible tolerance in walls verticality will be $\pm 0.30^\circ$.

3 TYPE OF VENUE

POOL CONSTRUCTION (I.E. CONCRETE, STAINLESS STEEL, ETC.)	
POOL FINISH (I.E. PAINT, PLASTER, TILE, LINER, ETC.)	

4 ORTHOGONALITY OF THE POOL

The sides of the pool shall be orthogonal and form 90 degrees right angles. The tolerance of the angle is $\pm 0.05^\circ$. The 2 diagonals shall be the same length. The tolerance of the diagonal is 10mm.

ORTHOGONALITY OF THE POOL	MEASUREMENT
ANGLE 1 [°]	
ANGLE 2 [°]	
ANGLE 3 [°]	
ANGLE 4 [°]	
DIAGONAL 1 [M]	
DIAGONAL 2 [M]	

5 LENGTH AND DIMENSIONAL TOLERANCES - 50M POOL WITH NO BULKHEAD

This section shall apply to 50m pools with no bulkhead. For other pool types, please use the corresponding page.

PART 2, 16.2.1 - Length: 50.000m between the Automatic Officiating Equipment touch panels at the starting end and the wall at the turning end.

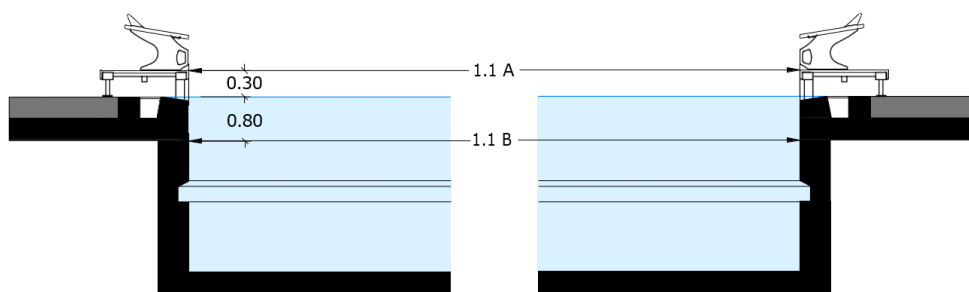
PART 2, 16.2.2.1 - The admissible tolerance in 50.000m swimming pools will be +0.010, - 0.000m. Tolerances will be measured as follows:

- **Wall to Wall without touch panels: Minimum 50.020m - Maximum 50.030m**

Tolerances have to be consistent 0.300m above to 0.800m below the water surface. These measurements should be certified by a surveyor or other qualified official, appointed or approved by the Member in the country in which the pool is located.

Distances between walls - Length shall be measured in the centre of the lane.

LANE NUMBER	1.1A [M]	1.1B [M]
0		
1		
2		
3		
4		
5		
6		
7		
8		
9		



6 LENGTH AND DIMENSIONAL TOLERANCES - 50M POOL WITH BULKHEAD

This section shall apply to 50m pools with a bulkhead. For other pool types, please use the corresponding page.

PART 2, 16.2.1 - Length: 50.000m between the Automatic Officiating Equipment touch panels at the starting end and the bulkhead at the turning end.

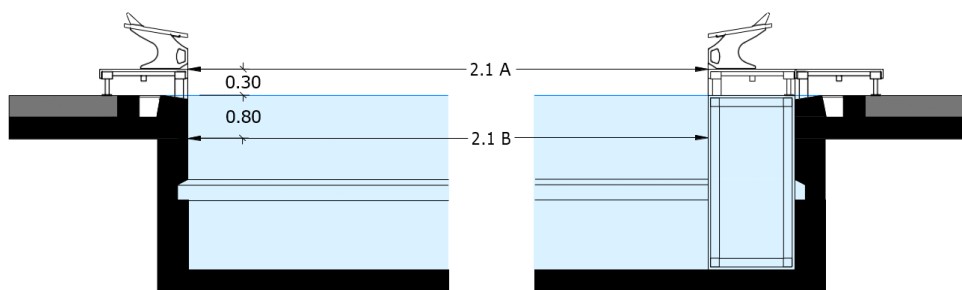
PART 2, 16.2.2.1 - The admissible tolerance in 50.000m swimming pools will be +0.010, - 0.000m. Tolerances will be measured as follows:

- **Wall to Bulkhead without touch panels: Minimum 50.020m - Maximum 50.030m**

Tolerances have to be consistent 0.300m above to 0.800m below the water surface. These measurements should be certified by a surveyor or other qualified official, appointed or approved by the Member in the country in which the pool is located.

Distances between walls - Length shall be measured in the centre of the lane.

LANE NUMBER	2.1A [M]	2.1B [M]
0		
1		
2		
3		
4		
5		
6		
7		
8		
9		



7 LENGTH AND DIMENSIONAL TOLERANCES - 25M POOL WITH BULKHEAD

This section shall apply to 25m pools with a bulkhead. For other pool types, please use the corresponding page.

PART 2, 16.2.1 - Length: For the World Aquatics Swimming Championships (25m) the length shall be 25.000m between the Automatic Officiating Equipment touch panels at the starting end and the wall or bulkhead at the turning end.

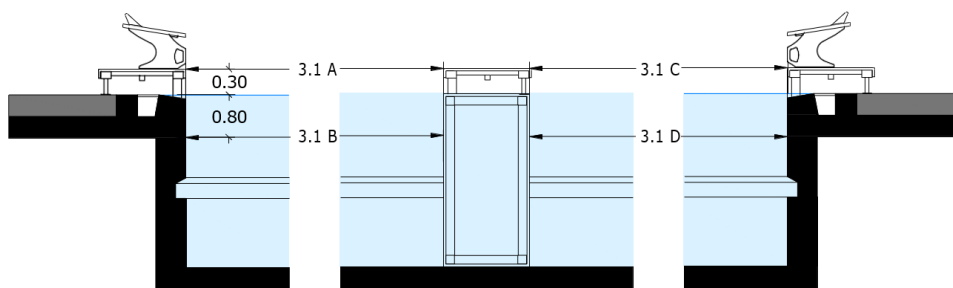
PART 2, 16.2.2.1 - The admissible tolerance in 25.000m swimming pools will be +0.010, - 0.000m. Tolerances will be measured as follows:

- **Wall to Bulkhead without touch panels: Minimum 25.020m - Maximum 25.030m***
* The distance during competition must be 25.000m - 25.010m.

Tolerances have to be consistent 0.300m above to 0.800m below the water surface. These measurements should be certified by a surveyor or other qualified official, appointed or approved by the Member in the country in which the pool is located.

Distances between walls - Length shall be measured in the centre of the lane.

LANE NUMBER	3.1A [M]	3.1B [M]	3.1C [M]	3.1D [M]
0				
1				
2				
3				
4				
5				
6				
7				
8				
9				



8 WIDTH

PART 2, 16.2.3 - Width

WIDTH	MEASUREMENT [M]
END WALL 1	
END WALL 2	

PART 2, 16.2.3.1 - Olympic Games: Permanent Swimming Pools shall be a minimum of 25.00m and Temporary Swimming Pools shall be 26.00m.

PART 2, 16.2.3.2 - World Aquatic Championships: Permanent Swimming Pools shall be a minimum of 25.00m and Temporary Swimming Pools shall be 26.00m

9 WATER DEPTH

PART 2, 16.2.4.1 - Olympic Games and World Aquatics Championships 50m pool: A minimum of 2.5m.

PART 2, 16.2.4.2 - World Aquatics Championships 25m pool: A minimum of 2.0m, 2.5m preferred.

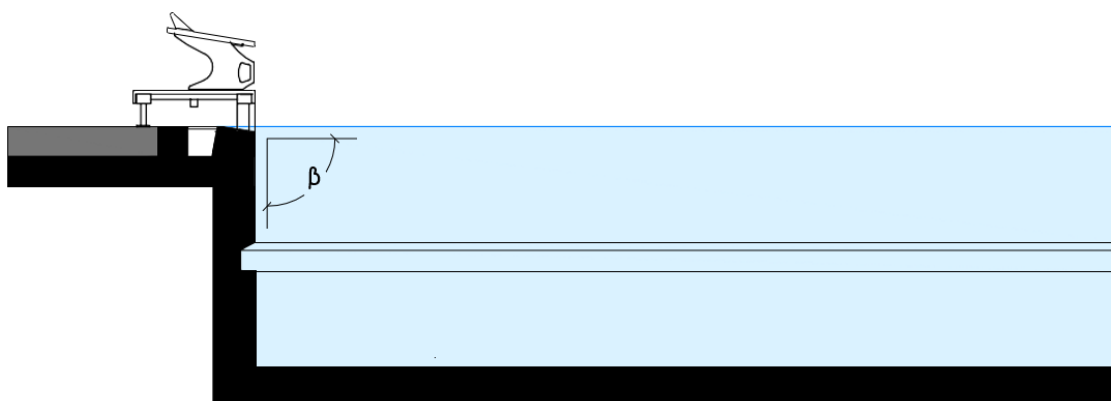
PART 2, 16.2.4.3 - When the pool is used for multi-sports (i.e., Artistic Swimming and Swimming) at either the Olympic Games or World Aquatics Championships: A minimum of 3m is required.

LANE	WATER DEPTH - 1M FROM END WALL 1 [M]	WATER DEPTH - CENTER [M]	WATER DEPTH - 1M FROM END WALL 2 [M]
0			
1			
2			
3			
4			
5			
6			
7			
8			
9			
MINIMUM POOL DEPTH [M]			
POOL LENGTH [M]			
POOL USE CASE (I.E OLYMPIC GAMES, WORLD CHAMPIONSHIPS, MULTISPORT)			

10 WALLS

PART 2, 16.2.5.1 - End walls shall be vertical, parallel and form 90-degree right angles to the swimming course and to the surface of the water. They shall be constructed of solid material, with a non-slip surface extending 0.8m below the water surface. The admissible tolerance in walls verticality will be ± 0.3 degrees.

LANE NUMBER	0	1	2	3	4	5	6	7	8	9
ANGLE β - END WALL 1										
ANGLE β - END WALL 2										



PART 2, 16.2.5.2 - Rest ledges along the pool walls are permitted; they must be not less than 1.2m below the water surface and may be 0.1m to 0.15m wide. Both internal and external ledges are acceptable, however internal ledges are preferred.

WORLD AQUATICS RULE	YES	NO	N/A
REST LEDGES PRESENT			-
REST LEDGES COMPLIANT WITH PART 2, 16.2.5.2			

11 LANES AND LANE ROPES - OLYMPIC GAMES

PART 2, 16.2.6.1 - Eight (8) lanes for Olympic Games, although 9 or 10 lanes may be used with approval from the Chair of the Technical Swimming Committee when faced with unusual circumstances.

WORLD AQUATICS RULE	COMPLIANT	NON-COMPLIANT	N/A
PART 2, 16.2.6.1 - OLYMPIC GAMES			
NUMBER OF LANES			

PART 2, 16.2.6.2 - Lanes shall be 2.5m wide with 2 spaces 2.5m wide outside of lanes 1 and 8. There must be a lane rope separating these spaces from lanes 1 and 8.

WORLD AQUATICS RULE	COMPLIANT	NON-COMPLIANT
PART 2, 16.2.6.2		

PART 2, 16.2.7.1 - [...] Lane ropes shall extend the full length of the course, secured at each end wall to anchor brackets recessed into the end walls. The anchor shall be positioned so that the floats at each end wall of the pool shall be on the surface of the water. Each lane rope will consist of floats placed end-to-end having a minimum diameter of 0.15m. [...] The components extending for a distance of 5.0m from each end of the pool shall be of RED colour. There shall not be more than one lane rope between each lane. The lane ropes shall be firmly stretched and the tensions should be between 1kN and 1,2kN.

Lane ropes shall comply with the entirety of **PART 2, 16.2.7.1**

WORLD AQUATICS RULE	COMPLIANT	NON-COMPLIANT
PART 2, 16.2.7.1		

PART 2, 16.2.7.1.1 - In an 8 (eight) lanes swimming pool the colour of the lane ropes should be as follows, unless otherwise varied by World Aquatics:

Two (2) GREEN ropes for lanes 1 and 8

Four (4) BLUE ropes for lanes 2, 3, 6 and 7

Three (3) YELLOW ropes for lanes 4 and 5

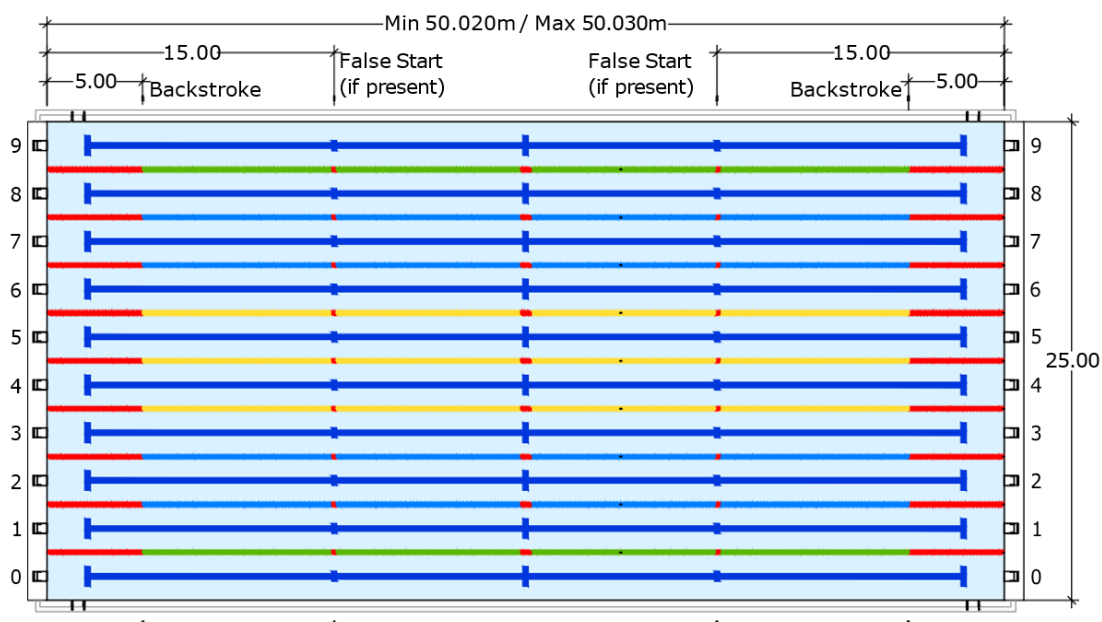
WORLD AQUATICS RULE	COMPLIANT	NON-COMPLIANT
PART 2, 16.2.7.1.1		

PART 2, 16.2.7.2 - At the 15m mark from each end wall of the pool the components shall be distinct in colour from the surrounding floats.

WORLD AQUATICS RULE	COMPLIANT	NON-COMPLIANT
PART 2, 16.2.7.2		

PART 2, 16.2.7.3 - In 50m pools the components shall be distinct in colour from the surrounding floats to mark 25m.

WORLD AQUATICS RULE	COMPLIANT	NONC-OMPLIANT
PART 2, 16.2.7.3		



12 LANES AND LANE ROPES - WORLD CHAMPIONSHIPS - PERMANENT POOLS

PART 2, 16.2.6.1 - Number of lanes: 10 lanes for World Championships.

WORLD AQUATICS RULE	COMPLIANT	NON-COMPLIANT
PART 2, 16.2.6.1 - WORLD CHAMPIONSHIPS		
NUMBER OF LANES		

PART 2, 16.2.6.3 - Lanes from 1 to 8 shall be 2.5m wide and lanes 0 and 9 shall be 2.4m wide with 2 spaces 0.1m wide outside of lanes 0 and 9. There must be a lane rope separating these spaces from lanes 0 and 9.

WORLD AQUATICS RULE	COMPLIANT	NON-COMPLIANT
PART 2, 16.2.6.3		

PART 2, 16.2.7.1 - [...] Lane ropes shall extend the full length of the course, secured at each end wall to anchor brackets recessed into the end walls. The anchor shall be positioned so that the floats at each end wall of the pool shall be on the surface of the water. Each lane rope will consist of floats placed end-to-end having a minimum diameter of 0.15m. [...] The components extending for a distance of 5.0m from each end of the pool shall be of RED colour. There shall not be more than one lane rope between each lane. The lane ropes shall be firmly stretched and the tensions should be between 1kN and 1,2kN.

Lane ropes shall comply with the entirety of **PART 2, 16.2.7.1**

WORLD AQUATICS RULE	COMPLIANT	NON-COMPLIANT
PART 2, 16.2.7.1		

PART 2, 16.2.7.1.2 - In a ten (10) lane swimming pool the colour of the lane ropes should be as follows, unless otherwise varied by World Aquatics:

Two (2) GREEN ropes for lanes 0 and 9

Six (6) BLUE ropes for lanes 1, 2, 3, 6, 7 and 8

Three (3) YELLOW ropes for lanes 4, 5

The floats extending for a distance of 5.0 metres from each end of the pool shall be of RED colour

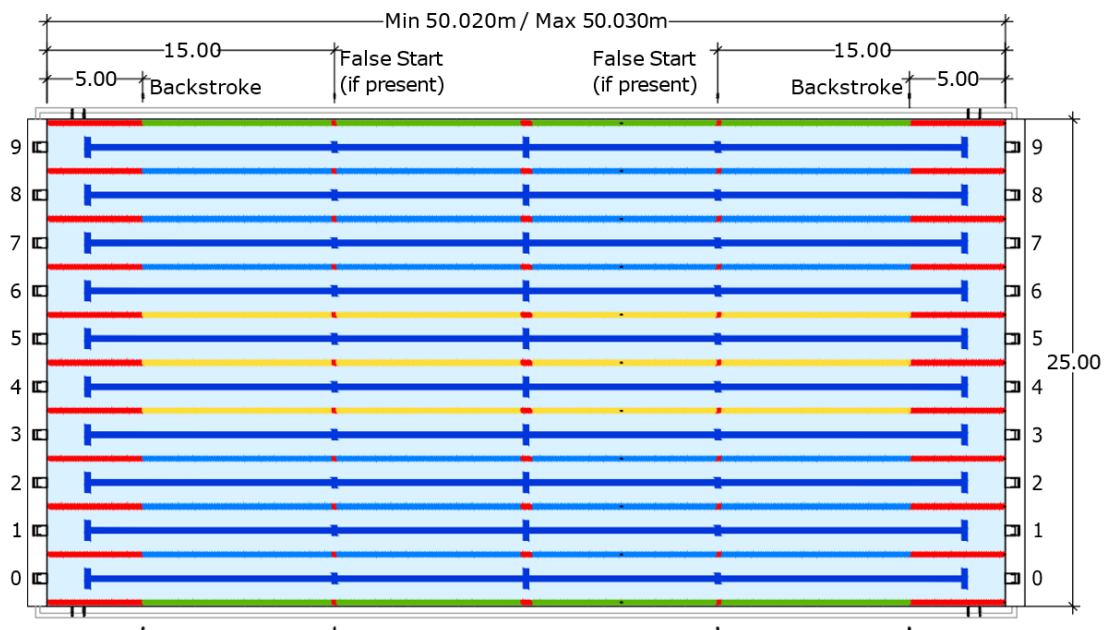
WORLD AQUATICS RULE	COMPLIANT	NON-COMPLIANT
PART 2, 16.2.7.1.2		

PART 2, 16.2.7.2 - At the 15m mark from each end wall of the pool the components shall be distinct in colour from the surrounding floats.

WORLD AQUATICS RULE	COMPLIANT	NON-COMPLIANT
PART 2, 16.2.7.2		

PART 2, 16.2.7.3 - In 50m pools the components shall be distinct in colour from the surrounding floats to mark 25m.

WORLD AQUATICS RULE	COMPLIANT	NON-COMPLIANT	N/A (25M ONLY)
PART 2, 16.2.7.3			



13 LANES AND LANE ROPES - WORLD CHAMPIONSHIPS - TEMPORARY POOLS

PART 2, 16.2.6.1 - Number of lanes: 10 lanes for World Championships.

WORLD AQUATICS RULE	COMPLIANT	NON-COMPLIANT
PART 2, 16.2.6.1 - WORLD CHAMPIONSHIPS		
NUMBER OF LANES		

PART 2, 16.2.6.3 - Lanes shall be 2.5m wide with 2 spaces 0.5m wide outside of lanes 0 and 9. There must be a lane rope separating these spaces from lanes 0 and 9.

WORLD AQUATICS RULE	COMPLIANT	NON-COMPLIANT
PART 2, 16.2.6.3		

PART 2, 16.2.7.1 - [...] Lane ropes shall extend the full length of the course, secured at each end wall to anchor brackets recessed into the end walls. The anchor shall be positioned so that the floats at each end wall of the pool shall be on the surface of the water. Each lane rope will consist of floats placed end-to-end having a minimum diameter of 0.15m. [...] The components extending for a distance of 5.0m from each end of the pool shall be of RED colour. There shall not be more than one lane rope between each lane. The lane ropes shall be firmly stretched and the tensions should be between 1kN and 1,2kN.

Lane ropes shall comply with the entirety of **PART 2, 16.2.7.1**

WORLD AQUATICS RULE	COMPLIANT	NON-COMPLIANT
PART 2, 16.2.7.1		

PART 2, 16.2.7.1.2 - In a ten (10) lane swimming pool the colour of the lane ropes should be as follows, unless otherwise varied by World Aquatics:

Two (2) GREEN ropes for lanes 0 and 9

Six (6) BLUE ropes for lanes 1, 2, 3, 6, 7 and 8

Three (3) YELLOW ropes for lanes 4, 5

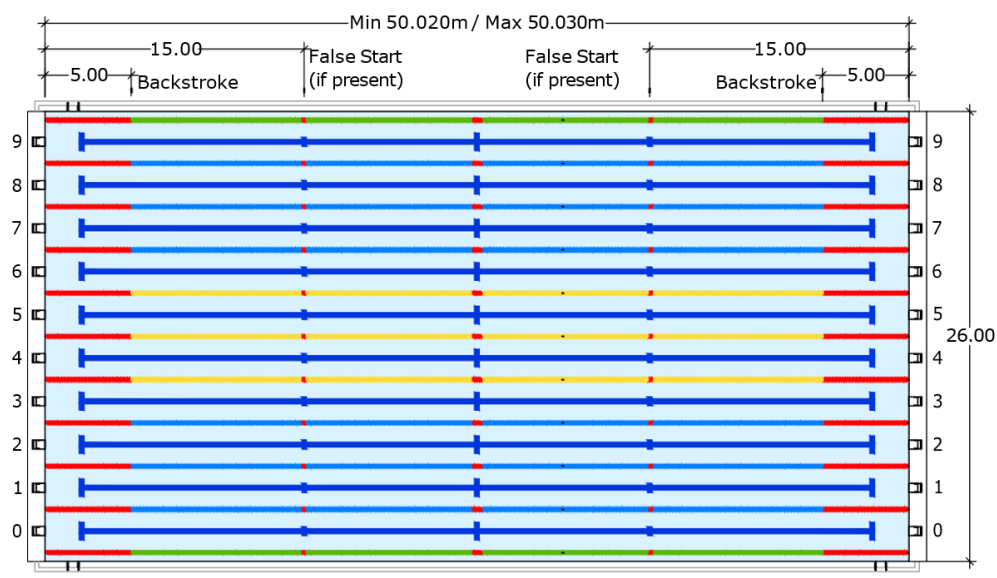
WORLD AQUATICS RULE	COMPLIANT	NON-COMPLIANT
PART 2, 16.2.7.1.2		

PART 2, 16.2.7.2 - At the 15m mark from each end wall of the pool the components shall be distinct in colour from the surrounding floats.

WORLD AQUATICS RULE	COMPLIANT	NON-COMPLIANT
PART 2, 16.2.7.2		

PART 2, 16.2.7.3 - In 50m pools the components shall be distinct in colour from the surrounding floats to mark 25m.

WORLD AQUATICS RULE	COMPLIANT	NON-COMPLIANT	N/A (25M ONLY)
PART 2, 16.2.7.3			



14 STARTING PLATFORMS

PART 2, 16.2.8 - Starting Platforms shall be firm and give no springing effect. The height of the platform (4.1 A) above the water surface shall be from 0.5m to 0.75m.

WORLD AQUATICS RULE	COMPLIANT	NON-COMPLIANT
PART 2, 16.2.8 (1)		

PART 2, 16.2.8 - The surface area (4.1 B x 4.1 C) shall be at least 0.5m x 0.6m and covered with a slip- resistant material.

WORLD AQUATICS RULE	COMPLIANT	NON-COMPLIANT
PART 2, 16.2.8 (2)		

PART 2, 16.2.8 - Maximum slope (4.1 β) shall not be more than 10 degrees.

WORLD AQUATICS RULE	COMPLIANT	NON-COMPLIANT
PART 2, 16.2.8 (3)		

PART 2, 16.2.8 - The starting platform may have an adjustable setting back plate. The platform shall be constructed so as to permit the gripping of the platform by the swimmer in the forward start at the front and the sides; it is recommended that, if the thickness of the starting platform exceeds 0.04m, grips of at least 0.1m width on each side and 0.4m width in the front be cut out to 0.03m from the surface of the platform.

WORLD AQUATICS RULE	COMPLIANT	NON-COMPLIANT
PART 2, 16.2.8 (4)		

PART 2, 16.2.8 - Handgrips for the forward start may be installed on the sides of the starting platforms.

WORLD AQUATICS RULE	COMPLIANT	NON-COMPLIANT	N/A
PART 2, 16.2.8 (5)			

PART 2, 16.2.8 - Handgrips for backstroke starts shall be placed within 0.3m to 0.6m above the water surface (4.1 D and 4.1 E) both horizontally and vertically. They shall be parallel to the surface of the end wall and must not protrude beyond the end wall.

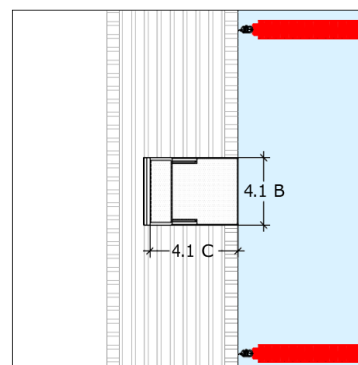
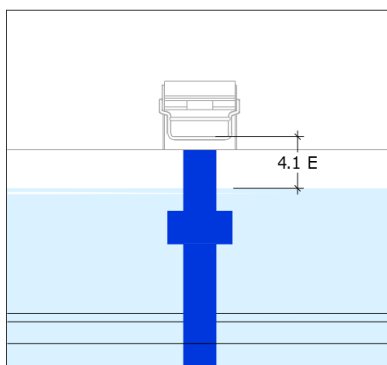
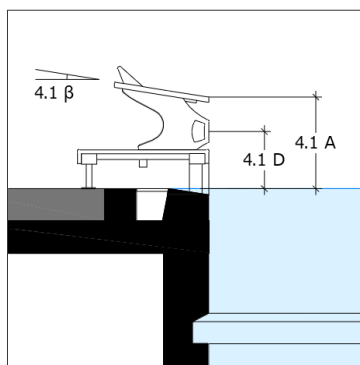
WORLD AQUATICS RULE	COMPLIANT	NON-COMPLIANT
PART 2, 16.2.8 (6)		

PART 2, 16.2.8 - A minimum depth of 1.35m, extending from 1.0m to at least 6.0m from the end wall is required for pools with starting blocks.

WORLD AQUATICS RULE	COMPLIANT	NON-COMPLIANT
PART 2, 16.2.8 (7)		

PART 2, 16.2.8 - Electronic read-out boards may be installed under the blocks. Flashing is not allowed. Figures must not move during a backstroke start.

WORLD AQUATICS RULE	COMPLIANT	NON-COMPLIANT	N/A
PART 2, 16.2.8 (8)			



15 NUMBERING

PART 2, 16.2.9 - Each starting block must be distinctly numbered on all four sides, clearly visible. It is recommended that lane number 0 shall be on the right-hand side when facing the course from the starting end with exception of 50m events, which may start from the opposite end. Touch panels may be numbered on the top and/or bottom part.

WORLD AQUATICS RULE	COMPLIANT	NON-COMPLIANT
PART 2, 16.2.9		

16 BACKSTROKE TURN INDICATORS

PART 2, 16.2.10 - Flagged ropes shall be suspended across the pool, 1.8m above the water surface, from fixed stanchions placed 5.0m from each end wall. Flags must be fixed to the ropes having the following dimensions: 0.20m on the rope forming a triangle measuring 0.40m on the sides. The distance between each flag must be 0.25m. If the flags are printed with or support / carry any signage this must be approved in advance by World Aquatics.

WORLD AQUATICS RULE	COMPLIANT	NON-COMPLIANT
PART 2, 16.2.10		

17 BACKSTROKE START LEDGE

PART 2, 16.2.10 - A backstroke ledge may be used. The ledge may be adjustable to 4 cm above or 4 cm below the water level. The ledge must be a minimum of 65 cm in length. The ledge must be 8 cm in height, 2 cm at the width with 10 degrees of slope.

WORLD AQUATICS RULE	YES	NO	N/A
BACKSTROKE START LEDGES PRESENT			-
START LEDGES COMPLIANT WITH PART 2, 16.2.10			

18 FALSE START ROPE

PART 2, 16.2.12 - False Start Rope may be suspended across the pool not less than 1.2m above the water level from fixed standards placed 15.0 m in front of the starting end. It shall be attached to the standards by a quick release mechanism. The rope must effectively cover all lanes when activated.

WORLD AQUATICS RULE	YES	NO	N/A
FALSE START ROPE PRESENT			-
FALSE START ROPE COMPLIANT WITH PART 2, 16.2.12			

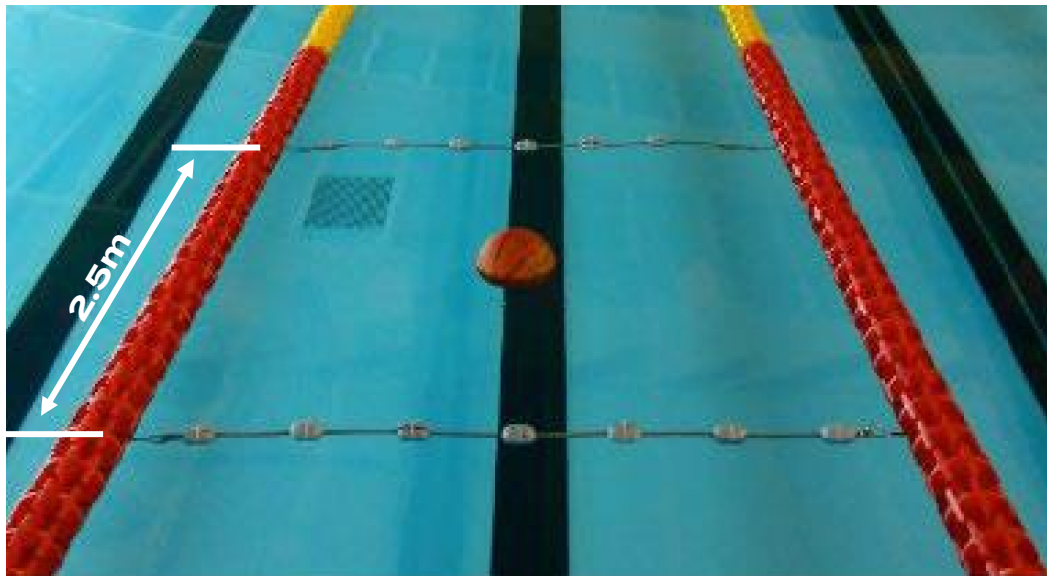
19 WATER CONDITIONS

PART 2, 16.2.13.1 - The water temperature shall be 25° to 28° Centigrade.

WORLD AQUATICS RULE	COMPLIANT	NON-COMPLIANT
PART 2, 16.2.13.1		

PART 2, 16.2.13.2 - During competition, the water in the pool must be at a constant level, with no appreciable movement. The practical way to test this is to install two floating lines crosswise in a swim lane (to obtain a square with 2,5m size) and then to leave the basketball in the central point of the square. If the ball does not touch any of the four lane ropes within 60 seconds, the turbulence test is successful. Test should be repeated in lanes 1,3,6,8 on two sides, at 5m from each end of the pool (end wall or bulkhead).

WORLD AQUATICS RULE	COMPLIANT	NON-COMPLIANT
PART 2, 16.2.13.2		



PART 2, 16.2.13.3 - World Records and World Junior Records can be established only in water with less than 3 gr/litre of salt. No World Records will be recognized in any kind of sea or ocean water.

WORLD AQUATICS RULE	COMPLIANT	NON-COMPLIANT
PART 2, 16.2.13.3		

20 LIGHT INTENSITY

PART 2, 16.2.14 - The light intensity over the whole pool shall not be less than 1500 lux. A lighting report shall be issued in addendum with this document.

WORLD AQUATICS RULE	COMPLIANT	NON-COMPLIANT
LIGHTING REPORT ISSUED		
PART 2, 16.2.14		

21 LANE MARKINGS

PART 2, 16.2.15 - Lane Markings shall be of a dark contrasting colour, placed on the floor of the pool in the centre of each lane.

Width: minimum 0.2m, maximum 0.3m.

Length: 46.0m for 50m pools / 21.0m for 25m pools.

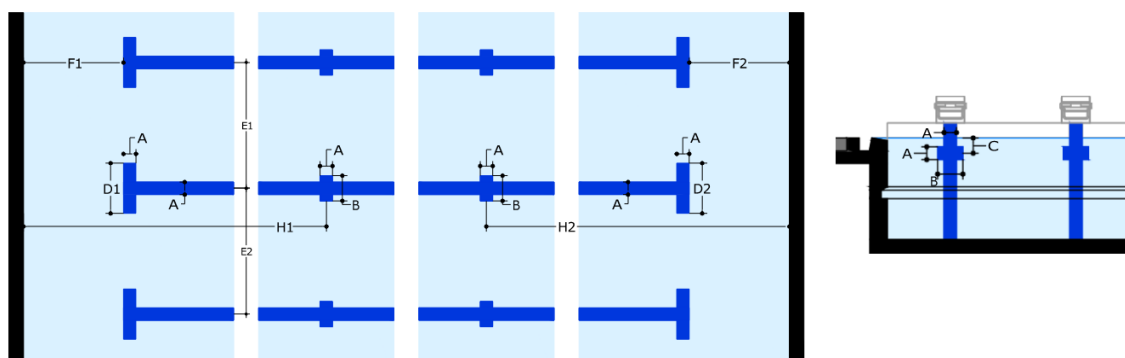
Each lane marking shall end 2.0m from the end wall of the pool with a distinctive cross line 1.0m long and of the same width as the lane line. Target lines shall be placed on the end walls or on the touch panels, in the centre of each lane, of the same width as the lane lines.

*Pool length tolerances must be considered.

They shall extend without interruption from the deck edge (curb) to the floor of the pool to a maximum of 3m. A cross line 0.5m long shall be placed 0.3m below the water surface, measured to the centre point of the cross line.

For 50m and 25m pools constructed after 1 January 2006, cross lines 0.5m long shall be placed at the 15m mark from each end of the pool. After October 2013 this shall be measured from the end wall to the centre point of the cross line.

A maximum tolerance of $\pm 5\text{mm}$ is acceptable.



LANE NUMBER	A	B	C	D1/D2	E1/E2	F1/F2	H1/H2
0							
1							
2							
3							
4							
5							
6							
7							
8							
9							

22 BULKHEADS

PART 2, 16.2.16 - When a bulkhead serves as an end wall, it must extend the full width of the course and present a solid smooth, non-slippery, stable vertical surface on which touch pads may be mounted extending not less than 0.8m below and 0.3m above the surface of the water, and must be free of hazardous openings above or below the waterline which may be penetrated by a swimmer's hands, feet, toes or fingers. A bulkhead must be of a design that provides for the free movement of officials along its length without such movement creating any appreciable current or water turbulence.

WORLD AQUATICS RULE	YES	NO	N/A
BULKHEAD PRESENT			-
BULKHEAD COMPLIANT WITH PART 2, 16.2.16			

23 MINIMUM DISTANCE SEPARATING THE POOLS

PART 2, 16.2.17 - If the swimming pool and the diving well are in the same area the minimum distance separating the pools shall be 5.0m. For pools constructed from 1st January 2014 the minimum distance separating the pool shall be a minimum of 8m however 10m is preferred, measured from water edge to water edge.

WORLD AQUATICS RULE	YES	NO	N/A
MULTIPLE POOLS PRESENT			-
MULTIPLE POOL COMPLIANT WITH PART 2, 16.2.17			

24 ADDITIONAL COMMENTS

THIS SECTION IS PROVIDED FOR ADDITIONAL COMMENTS:

25 SIGNATURES

BUILDING NAME			
SURVEYOR		SIGNATURE	
POOL EXPERT		SIGNATURE	
ORGANIZING BODY		SIGNATURE	
FEDERATION			
POOL NUMBER		DATE	