



**WORLD
AQUATICS**

SWIMMING WORLD RECORD VALIDATION

ORGANIZING BODY

BUILDING NAME

OWNER

CONTRACTOR

DESIGN TEAM

DATE

WORLD AQUATICS

APPROVED BY

DATE

SIGNATURE

MEASUREMENT CRITERIA

1. THE MEASUREMENTS SHALL BE DONE BY A CERTIFIED SURVEYOR, ENGINEER, OR OTHER QUALIFIED OFFICIAL APPOINTED OR APPROVED BY THE MEMBER IN THE COUNTRY IN WHICH THE VENUE IS LOCATED.
2. THE SURVEYING EQUIPMENT SHALL BE A LASER DISTANCE MEASURE.
 - 2.1 DISTANCE MEASUREMENT ACCURACY: 2MM OVER 50M, 1MM OVER 50M PREFERRED.
3. THE APPOINTED SURVEYOR SHALL PROVIDE A CALIBRATION CERTIFICATE CONFIRMING THE MEASUREMENT QUALITY OF SURVEYING EQUIPMENT. THE CERTIFICATE SHALL HAVE A MAXIMUM VALIDITY OF 1 YEAR.
4. ALL DIMENSIONS SHALL BE MEASURED USING A MINI PRISM OR TARGETS.
5. THE MEASUREMENTS CORRESPONDING TO PART 2, 16.2.1, AND 16.2.2, 16.2.8 SHALL BE MEASURED WITH THE POOL FULL OF WATER. THE WATER LEVEL CAN BE LOWERED UP TO 5CM TO AVOID WATER REFLECTION WHEN MEASURING.
6. THE WATER TEMPERATURE SHALL BE 25° TO 28° CENTIGRADE.
7. THE LENGTH OF THE POOL IN PART 2, 16.2.1 SHALL BE MEASURED IN THE CENTRE OF EACH LANE.

LENGTH AND DIMENSIONAL TOLERANCES

This section shall apply to all lanes in which a World Record has been broken. The measurements must be taken prior to changing the course layout.

PART 2, 16.2.1 - 50.000 metres between the Automatic Officiating Equipment touch panels, except for the World Aquatics Swimming Championships (25m), which shall be 25.000 metres between the Automatic Officiating Equipment touch panels at the starting end and the wall or touch panels at the turning end.

PART 2, 16.2.2 - The admissible tolerance will be +0.010, -0.000m. Tolerances will be measured as follows:

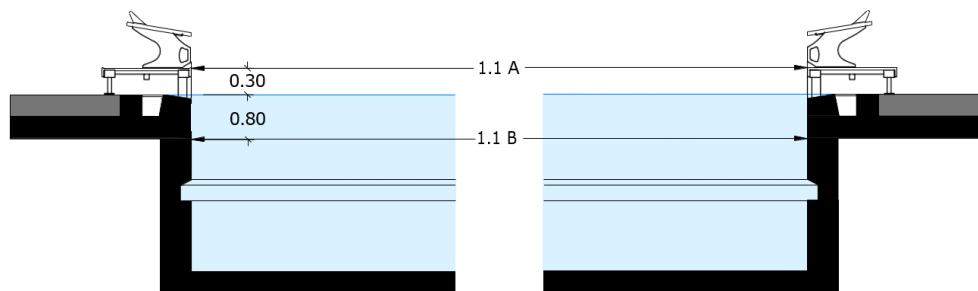
Wall to Wall with touch panels: Minimum 50.000m - Maximum 50.010m

Wall to Wall with touch panels: Minimum 25.000m - Maximum 25.010m

Tolerances have to be consistent 0.300m above to 0.800m below the water surface. These measurements should be certified by a surveyor or other qualified official, appointed or approved by the Member in the country in which the pool is located.

Distances between walls - Length shall be measured in the centre of the lanene.

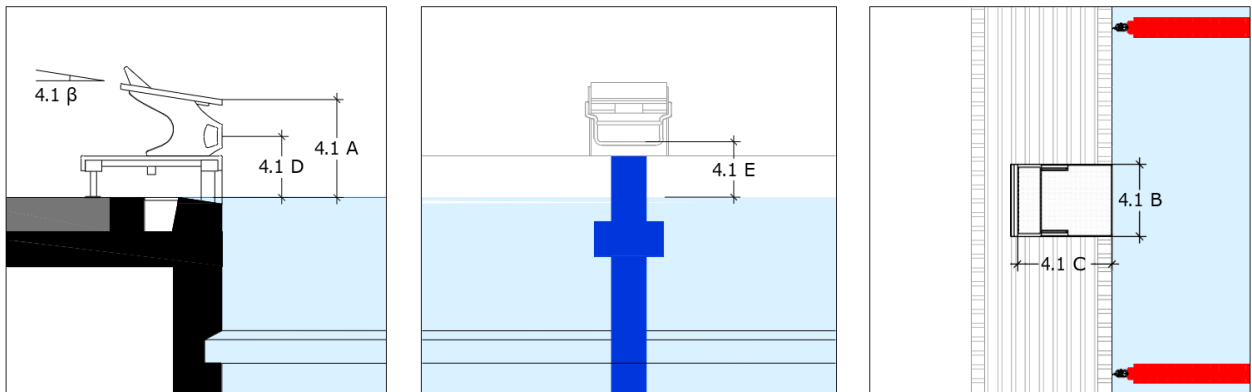
| LANE NUMBER | 1.1A [M] | 1.1B [M] |
|-------------|----------|----------|
| 0 | | |
| 1 | | |
| 2 | | |
| 3 | | |
| 4 | | |
| 5 | | |
| 6 | | |
| 7 | | |
| 8 | | |
| 9 | | |



STARTING PLATFORMS

PART 2, 16.2.8 - Starting Platforms shall conform to part 2, 16.2.8 in its entirety.

| WORLD AQUATICS RULE | COMPLIANT | NONCOMPLIANT |
|---------------------|-----------|--------------|
| PART 2, 16.2.8 | | |



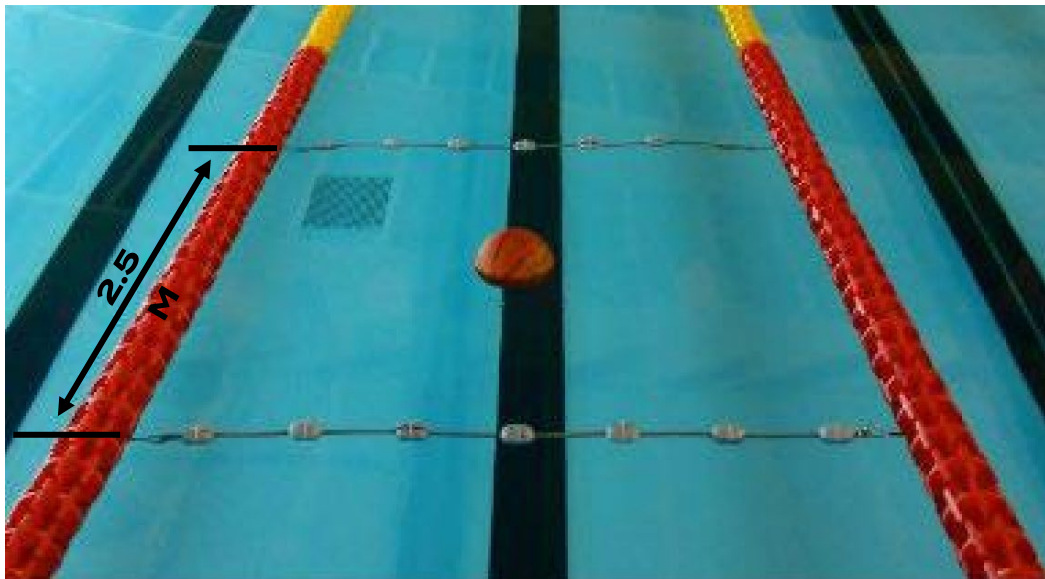
WATER CONDITIONS

PART 2, 16.2.13.1 - The water temperature shall be 25° to 28° Centigrade.

| WORLD AQUATICS RULE | COMPLIANT | NONCOMPLIANT |
|---------------------|-----------|--------------|
| PART 2, 16.2.13.1 | | |

PART 2, 16.2.13.2 - During competition, the water in the pool must be at a constant level, with no appreciable movement. The practical way to test this is to install two floating lines crosswise in a swim lane (to obtain a square with 2,5m size) and then to leave the basketball in the central point of the square. If the ball does not touch any of the four lane ropes within 60 seconds, the turbulence test is successful. Test should be repeated in lanes 1,3,6,8 on two sides, at 5m from each end of the pool (end wall or bulkhead).

| WORLD AQUATICS RULE | COMPLIANT | NONCOMPLIANT |
|---------------------|-----------|--------------|
| PART 2, 16.2.13.2 | | |



PART 2, 16.2.13.3 - World Records and World Junior Records can be established only in water with less than 3 gr/litre of salt. No World Records will be recognized in any kind of sea or ocean water.

| WORLD AQUATICS RULE | COMPLIANT | NONCOMPLIANT |
|---------------------|-----------|--------------|
| PART 2, 16.2.13.3 | | |

SIGNATURES

| | | | |
|-----------------|--|-----------|--|
| BUILDING NAME | | | |
| SURVEYOR | | SIGNATURE | |
| POOL EXPERT | | SIGNATURE | |
| ORGANIZING BODY | | SIGNATURE | |
| FEDERATION | | | |
| POOL NUMBER | | DATE | |